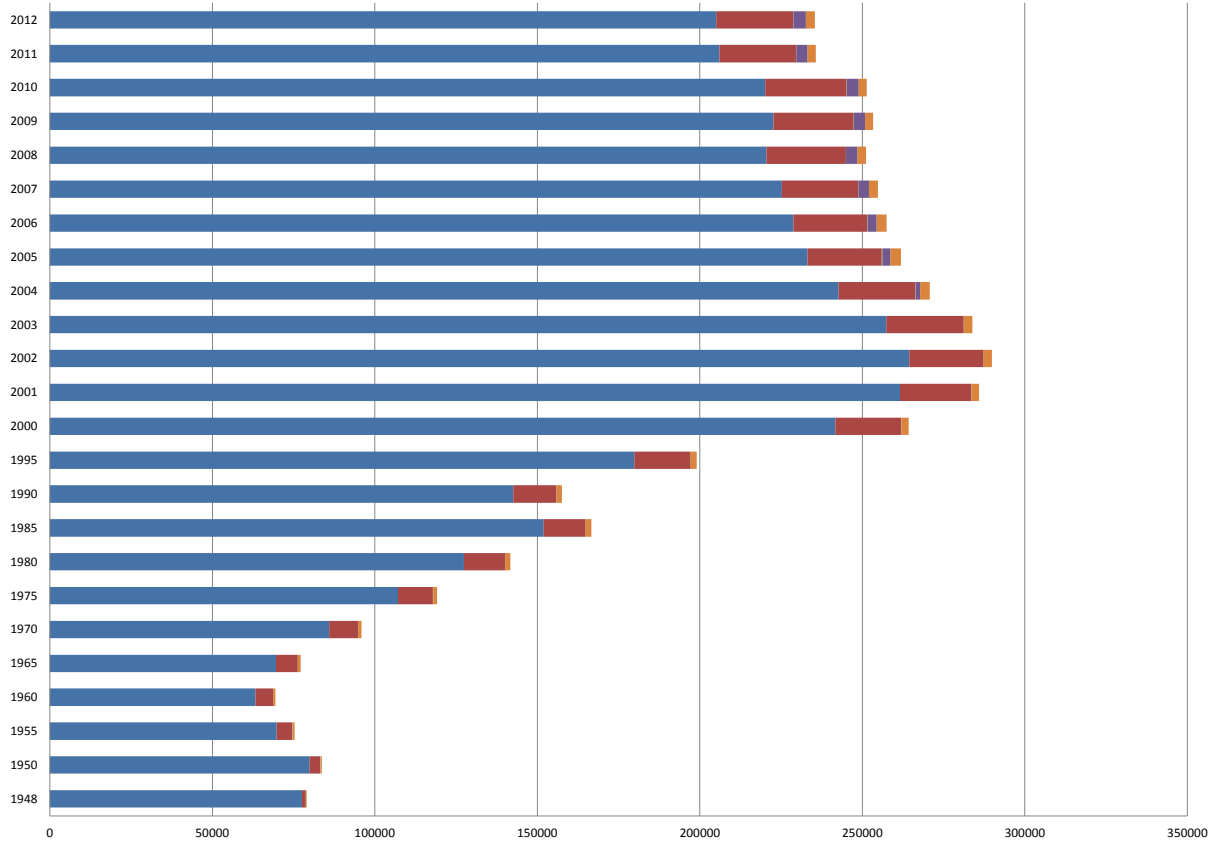
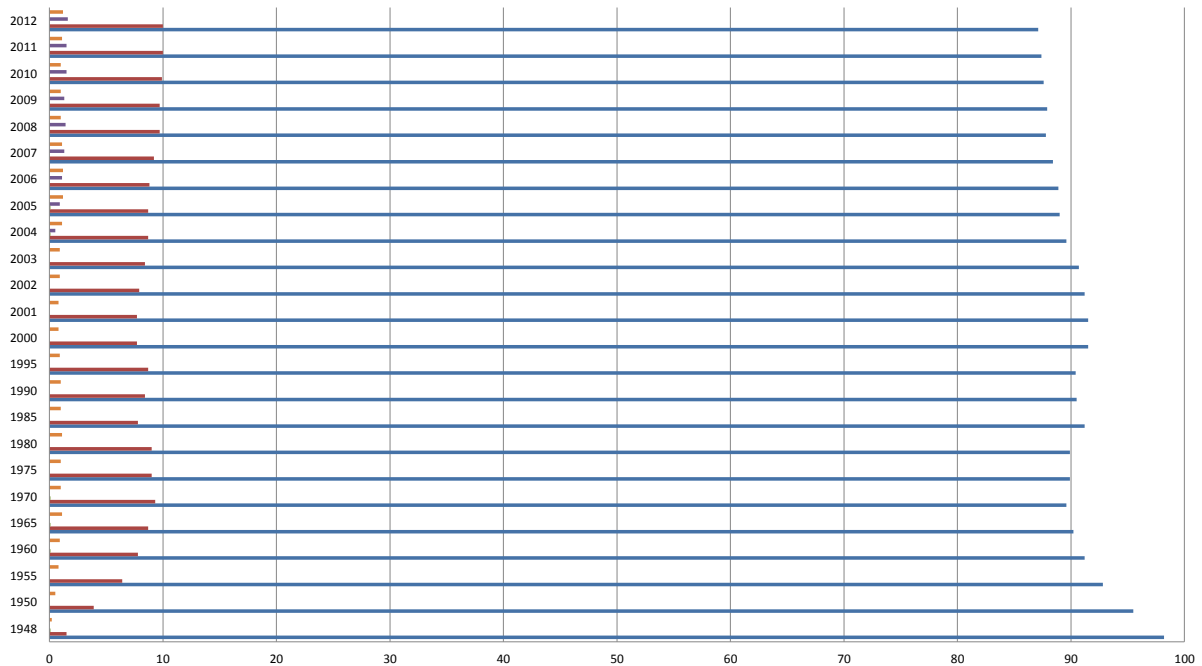


平成24年人口動態調査 離婚の種類別にみた年次別離婚件数



	1948	1950	1955	1960	1965	1970	1975	1980	1985	1990	1995	2000	2001	2002	2003	2004	2005	2006	2007	2008	2009	2010	2011	2012
協議離婚	77573	79955	69839	63302	69599	85920	107138	127379	151918	142623	179844	241703	261631	264430	257361	242680	233086	228802	225215	220487	222662	220166	205998	205074
調停離婚	1220	3276	4833	5413	6692	8960	10771	12732	12928	13317	17302	20230	21957	22846	23856	23609	22906	22683	23476	24432	24654	24977	23576	23616
審判離婚	92	25	27	43	41	64	54	46	59	44	66	85	81	74	61	152	185	121	97	84	89	84	69	82
和解離婚	0	0	0	0	0	0	0	0	0	0	0	0	0	0	0	1341	2476	2805	3243	3486	3414	3648	3478	3831
認諾離婚	0	0	0	0	0	0	0	0	0	0	0	0	0	0	0	14	19	17	15	11	22	30	24	15
判決離婚	147	433	568	652	863	993	1172	1532	1735	1624	1804	2228	2242	2486	2576	3008	3245	3047	2786	2636	2512	2473	2574	2788

平成24年人口動態調査 離婚の種類別にみた年次別離婚百分率



	1948	1950	1955	1960	1965	1970	1975	1980	1985	1990	1995	2000	2001	2002	2003	2004	2005	2006	2007	2008	2009	2010	2011	2012
判決離婚 (%)	0.2	0.5	0.8	0.9	1.1	1	1	1.1	1	1	0.9	0.8	0.8	0.9	0.9	1.1	1.2	1.2	1.1	1	1	1	1.1	1.2
認諾離婚 (%)	0	0	0	0	0	0	0	0	0	0	0	0	0	0	0	0	0	0	0	0	0	0	0	0
和解離婚 (%)	0	0	0	0	0	0	0	0	0	0	0	0	0	0	0	0.5	0.9	1.1	1.3	1.4	1.3	1.5	1.5	1.6
審判離婚 (%)	0.1	0	0	0.1	0.1	0.1	0	0	0	0	0	0	0	0	0	0.1	0.1	0	0	0	0	0	0	0
調停離婚 (%)	1.5	3.9	6.4	7.8	8.7	9.3	9	9	7.8	8.4	8.7	7.7	7.7	7.9	8.4	8.7	8.7	8.8	9.2	9.7	9.7	9.9	10	10
協議離婚 (%)	98.2	95.5	92.8	91.2	90.2	89.6	89.9	89.9	91.2	90.5	90.4	91.5	91.5	91.2	90.7	89.6	89	88.9	88.4	87.8	87.9	87.6	87.4	87.1